

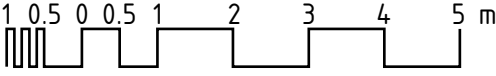


- | LEGEND OF ABBREVIATIONS: | |
|---------------------------------|---------------------------|
| SS | SEWER STACK |
| WS | WASTE STACK |
| WV | WASTE VENT |
| GV | GROUP VENT |
| SV | SEWER VENT |
| TA | TO ABOVE |
| TB | TO BELOW |
| FA | FROM ABOVE |
| FB | FROM BELOW |
| DCW | DOMESTIC COLD WATER |
| DHW | DOMESTIC HOT WATER |
| DHWR | DOMESTIC HOT WATER RETURN |
| NG | NATURAL GAS |

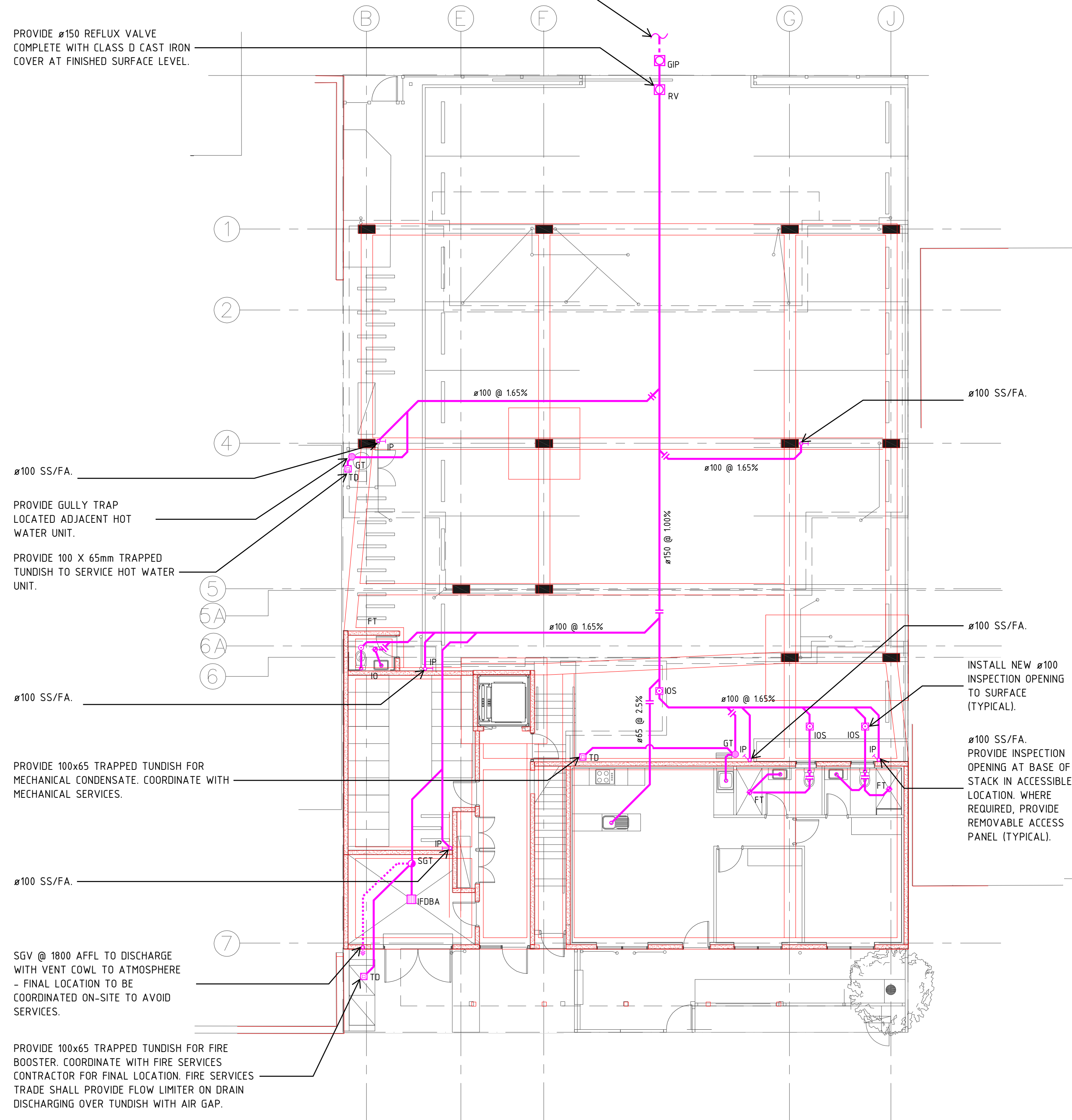
GENERAL NOTES:

1. THESE DRAWINGS SHALL BE READ IN CONJUNCTION WITH ARCHITECTURAL DRAWINGS, DETAILS AND OTHER CONSULTANTS DRAWINGS AND SPECIFICATION AND WITH OTHER WRITTEN INSTRUCTIONS AS MAY BE ISSUED DURING THE COURSE OF THE CONTRACT.
2. DO NOT SCALE OFF DRAWINGS. ALL DIMENSIONS SHALL BE VERIFIED FROM ARCHITECTS DRAWINGS. PIPEWORK SIZES SHOWN ARE IN NOMINAL BORE DIAMETER UNLESS NOTED OTHERWISE.
3. UNLESS NOTED OTHERWISE ALL DIMENSIONS ARE IN MILLIMETRES.
4. THE SANITARY PLUMBING AND DRAINAGE WORKS SHALL BE CARRIED OUT IN ACCORDANCE WITH AS/NZS 3500.
5. PAINTING AND IDENTIFICATION OF PIPE RUNS SHALL BE IN ACCORDANCE WITH MANUFACTURERS RECOMMENDATIONS, AS/NZS 3500 AND AS/NZS 1345
6. THE PLUMBING CONTRACTOR SHALL SUBMIT DRAWINGS AND OBTAIN BUILDING APPROVAL AND NOTIFY THE OTR PLUMBING AND DRAINAGE INSPECTION BRANCH PRIOR TO STARTING WORK ON SITE. WHERE CHANGES ARE REQUIRED TO THE PLUMBING DRAINAGE SYSTEM DESIGN TO SATISFY THE PLUMBING AND DRAINAGE INSPECTION BRANCH, THE CONTRACTOR MUST RECORD CHANGES & INCLUDE WITHIN THE "AS INSTALLED" DRAWINGS.
7. THE WHOLE OF THE SANITARY PLUMBING AND WATER SUPPLY SHALL BE CARRIED OUT BY, OR UNDER THE DIRECT SUPERVISION OF, A REGISTERED FULLY LICENSED CONTRACTOR PLUMBER. ALL WORK SHALL BE DONE IN ACCORDANCE WITH THE RELEVANT PROVISIONS OF AS/NZS3500, THE REGULATIONS AND DIRECTIONS OF THE 'SA WATER CORPORATION', 'OFFICE OF THE TECHNICAL REGULATOR (OTR) AND TO THE COMPLETE SATISFACTION OF THE SUPERINTENDENT.
8. ALLOW FOR ALL COSTS ASSOCIATED WITH THE TESTING OF THE INSTALLATION AND INSPECTION BY LOCAL AUTHORITIES AS REQUIRED.
9. FLOOR LEVELS, INVERT LEVELS, STRUCTURAL ELEMENTS AND THE LOCATION OF EXISTING SERVICES SHALL BE CHECKED ON SITE PRIOR TO SETTING OUT. NO ADDITIONAL CLAIMS WILL BE CONSIDERED IF FAILURE TO COMPLY WITH THIS REQUIREMENT RESULTS IN ADDITIONAL COSTS TO THE PLUMBING CONTRACTOR. TAKE INTO ACCOUNT ANY EXISTING CONDITIONS LIKELY TO AFFECT PERFORMANCE OF THE CONTRACT. TENDER PRICE WILL BE DEEMED ALL INCLUSIVE.
10. ALLOW FOR NECESSARY OUT OF HOURS WORKS INCLUDING BUT NOT LIMITED TO CONNECTIONS TO AUTHORITY MAINS AND INSTALLATION OF WORKS WITHIN ADJACENT TENANCIES.
11. THE FOLLOWING MATERIALS SHALL BE EMPLOYED IN THE DOMESTIC HOT, WARM AND COLD WATER PIPEWORK RETICULATION SYSTEM:
 - COPPER TYPE B - EXTERNAL ABOVE GROUND.
 - CROSS LINKED HIGH DENSITY POLYETHYLENE - REHAU OR EQUAL INTERNAL HOT AND COLD WATER PIPEWORK.
 - INTERNAL EXPOSED PIPEWORK TO BE CHROME PLATED.
12. THE CONTRACTOR SHALL SUPPLY AND INSTALL ALL SANITARY WARE AND TAPWARE AS SCHEDULED BY THE ARCHITECT.
13. THE PLUMBING TRADE SHALL BE RESPONSIBLE FOR SETTING OUT OF THEIR WORKS BY CO-ORDINATING WITH ASSOCIATED TRADES & SERVICES. ALL BUILDING PENETRATIONS SHALL BE BY THE CONTRACTOR.
14. CONTRACTOR TO SUPPLY AND INSTALL FIRE STOP COLLARS AND APPROVED BY MANUFACTURER FOR SERVICES PASSING THROUGH FIRE RATED ELEMENTS AND FIRE COMPARTMENTS. FIRE RATED SEALS SHALL BE IN ACCORDANCE WITH RELEVANT AUSTRALIAN STANDARDS, NATIONAL CONSTRUCTION CODE (NCC) AND THE REQUIREMENTS AND RECOMMENDATIONS OF THE BUILDING SURVEYOR.
15. FIRE SEAL AROUND ALL PIPE PENETRATIONS THROUGH FIRE RATED CONSTRUCTION WALLS WITH CERTIFIED MATERIALS AS APPROVED BY MANUFACTURER.
16. ALLOW TO COORDINATE WITH THE EXISTING STRUCTURE AND SERVICES AND ALLOW FOR ANY ADDITIONAL COSTS ASSOCIATED WITH THIS COORDINATION.
17. PROVIDE ACOUSTIC LAGGING TO PIPEWORK RUNS WITHIN CEILING VOIDS AND ABOVE ANY HABITABLE SPACES AS PER HYDRAULIC SPECIFICATION.

A	CONSTRUCTION ISSUE		01.07.19	PL	
REV N		DESCRIPTION		DATE	CHECK'D
 LUCID CONSULTING AUSTRALIA Level 3/169, Pirie St Adelaide SA 5000 Phone: (08) 8407 9700 Email: adelaide@lucidconsulting.com.au					
 STUDIO NINE ARCHITECTS					
PROJECT					
168 PROSPECT ROAD, PROSPECT SA					
DRAWING					
SITE PLAN, GENERAL NOTES, DRAWING INDEX, LEGEND OF SYMBOLS, LEGEND OF PIPEWORK AND LEGEND OF ABBREVIATIONS					
 SCALEBAR 1:100					
SCALE		Size	HYDRAULIC SERVICES		
1:100 @ A1		A1			
DESIGNER		DRAWN	DATE		REV/N
AS		WL	JULY 19		
DRAWING NUMBER					
LCE12584-H01					

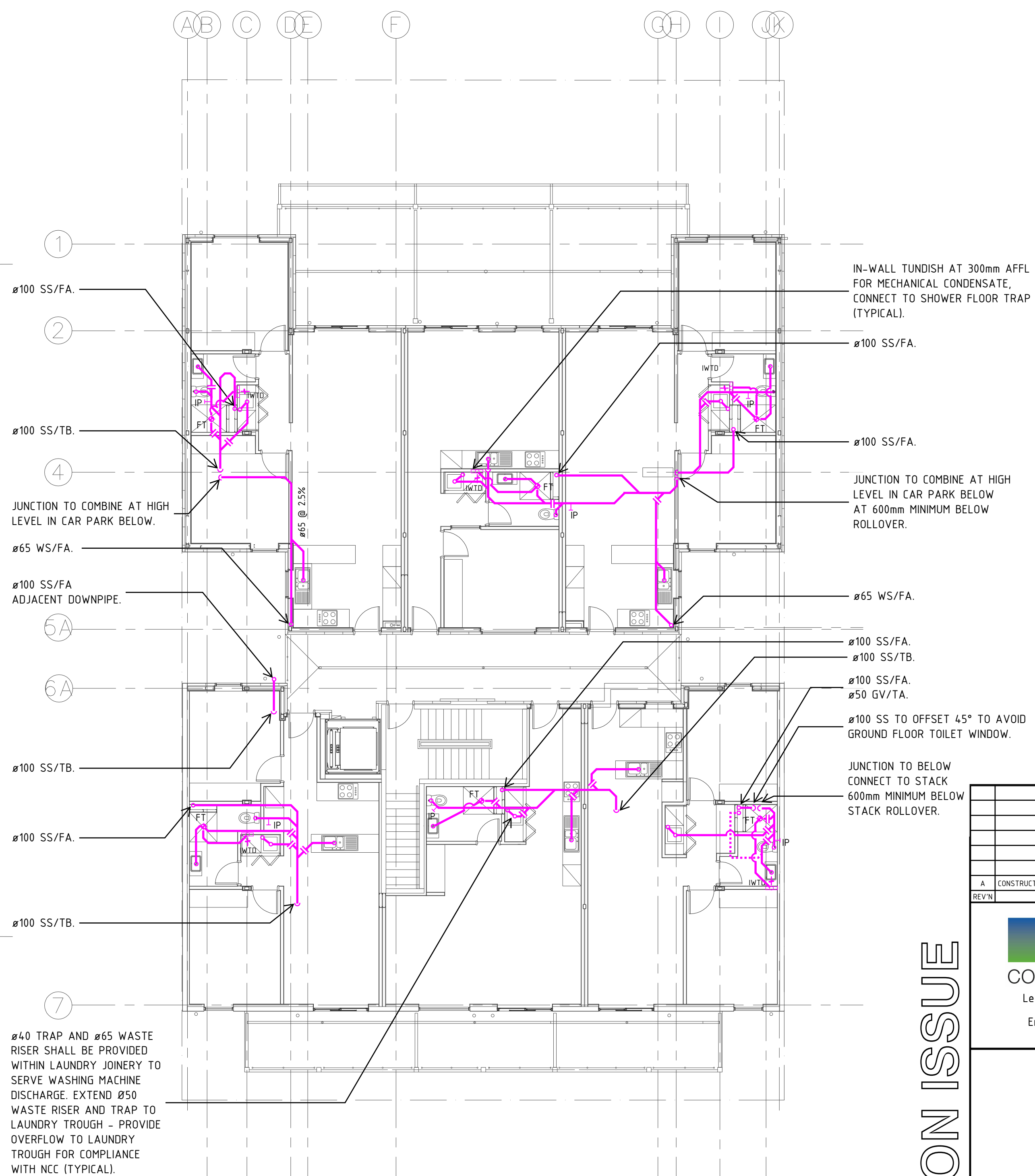
© Copyright Lucid Consulting Australia

PROVIDE Ø150 REFLUX VALVE
COMPLETE WITH CLASS D CAST IRON
COVER AT FINISHED SURFACE LEVEL.



SCALE: 1:100

NOTE:
FINAL COORDINATION WITH STRUCTURE
SHALL BE UNDERTAKEN UPON RECEIPT OF
FINAL STRUCTURAL DRAWINGS.



SCALE: 1:100

CONSTRUCTION ISSUE

A	CONSTRUCTION ISSUE						01.07.19	PL	
REV/N	DESCRIPTION						DATE	CHK'D	
<div><div><div></div><div></div></div><div>LUCID</div><div>CONSULTING AUSTRALIA</div><div>Level 3/169, Pirie St Adelaide SA 5000</div><div>Phone: (08) 8407 9700</div><div>Email: adelaide@lucidconsulting.com.au</div></div>									
<div><div><div></div><div></div><div></div><div></div></div><div>STUDIO NINE</div><div>ARCHITECTS</div></div>									
PROJECT									
168 PROSPECT ROAD, PROSPECT SA									
DRAWING									
GROUND FLOOR AND FIRST FLOOR SANITARY DRAINAGE ARRANGEMENT									
<div><div><div></div><div></div><div></div><div></div><div></div><div></div><div></div><div></div><div></div><div></div></div><div>10.52345</div><div>SCALEBAR 1:100</div></div>									
SCALE		Size							
1:100 @ A1		A1		HYDRAULIC SERVICES					
DESIGNER		DRAWN		DATE					
AS		WL		JULY 19					
DRAWING NUMBER								REV/N	
LCE12584-H02								A	



NOT TO SCALE
FOR INFORMATION ONLY



NOTE:
TERMINATE ALL VENTS MINIMUM 150mm
ABOVE ROOF WITH APPROVED VENT COWL.
MINIMUM 6m CLEAR AWAY FROM ANY
FRESH AIR INTAKE.



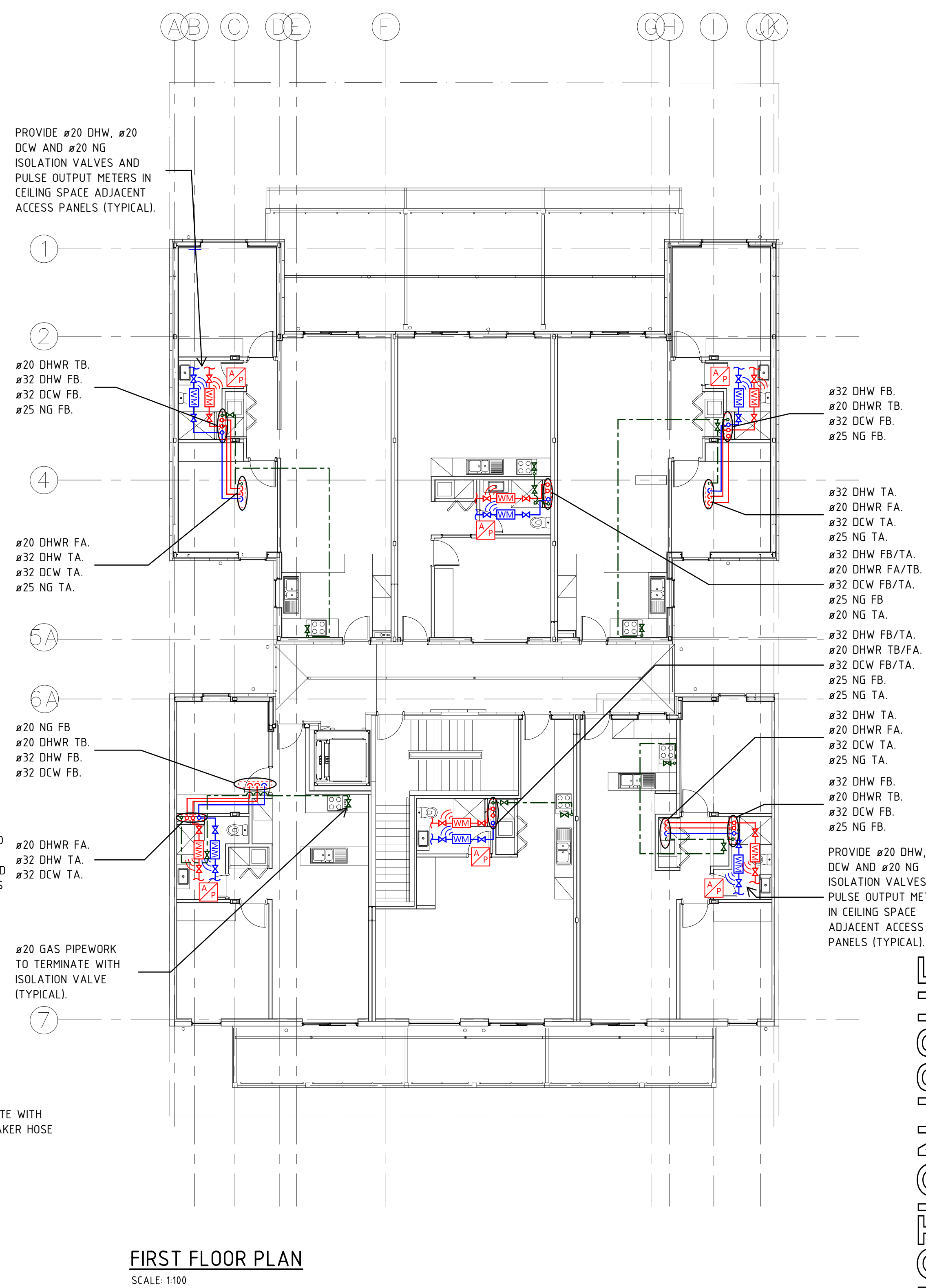
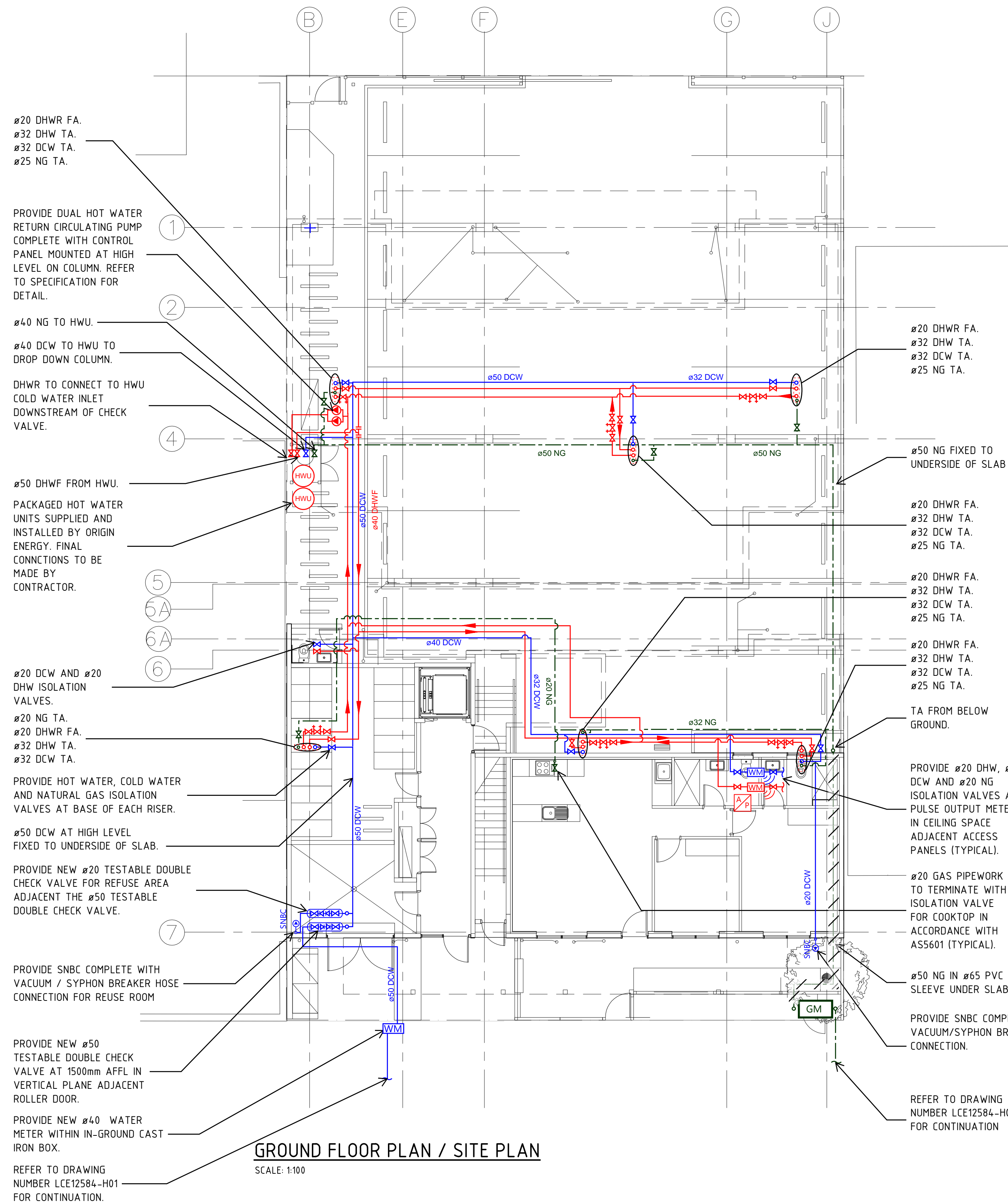
NOT TO SCALE
FOR INFORMATION ONLY



NOT TO SCALE
FOR INFORMATION ONLY

CONSTRUCTION ISSUE

© Copyright Lucid Consulting Australia



CONSTRUCTION ISSUE

A		CONSTRUCTION ISSUE	01/07/19	PL
REV	N	DESCRIPTION	DATE	CHK'D

LUCID
CONSULTING AUSTRALIA
Level 3/169, Pirie St Adelaide SA 5000
Phone: (08) 8407 9700
Email: adelaide@lucidconsulting.com.au

STUDIO NINE
ARCHITECTS

PROJECT
168 PROSPECT ROAD,
PROSPECT SA

DRAWING
GROUND FLOOR AND LEVEL 1
WATER AND GAS RETICULATION
ARRANGEMENT

1 0.5 0 0.5 1 2 3 4 5 m
SCALEBAR 1:100

SCALE
1:100 @ A1

Size
A1

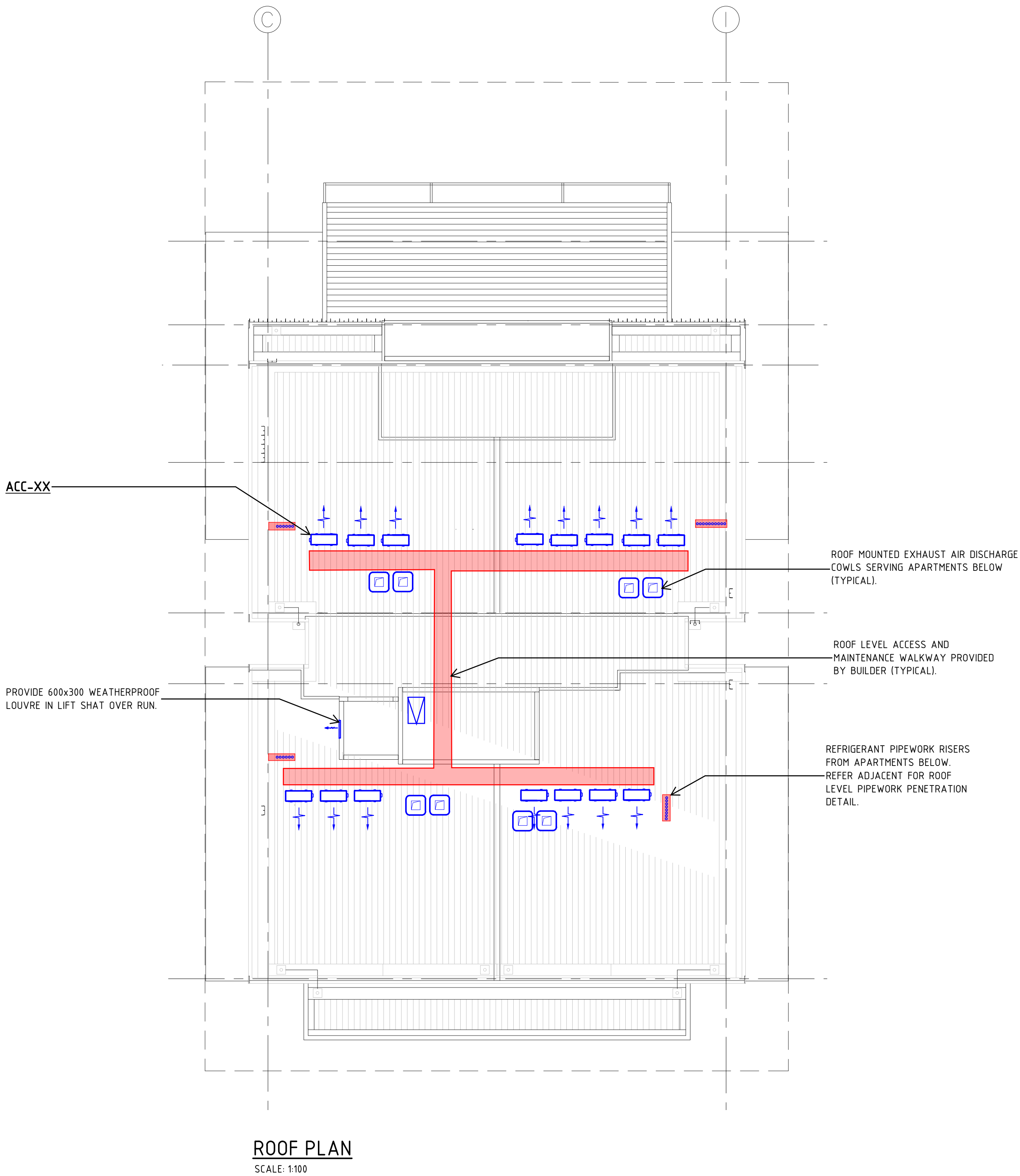
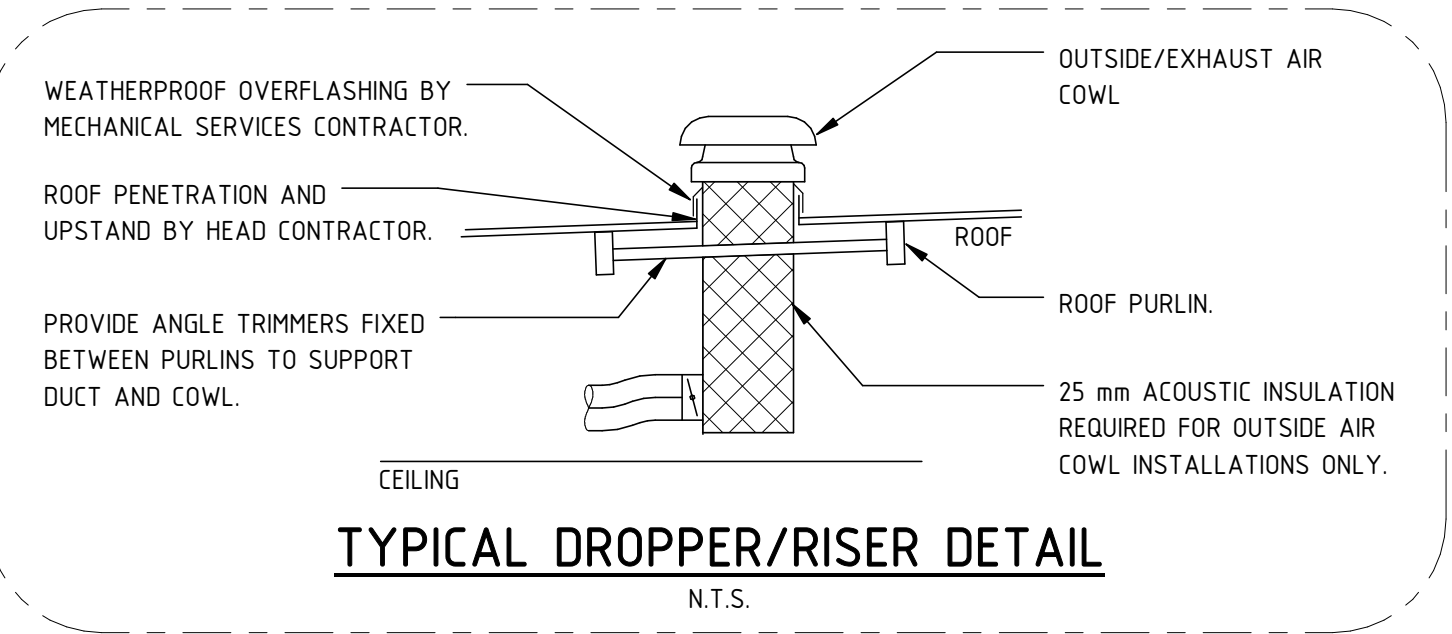
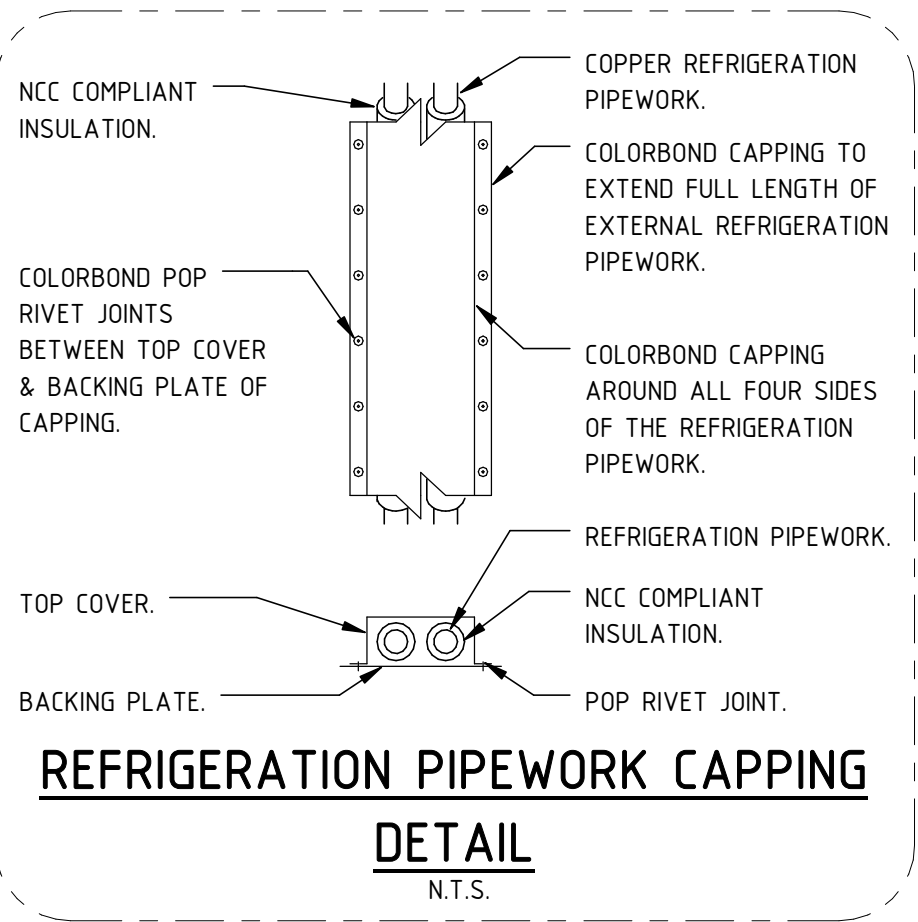
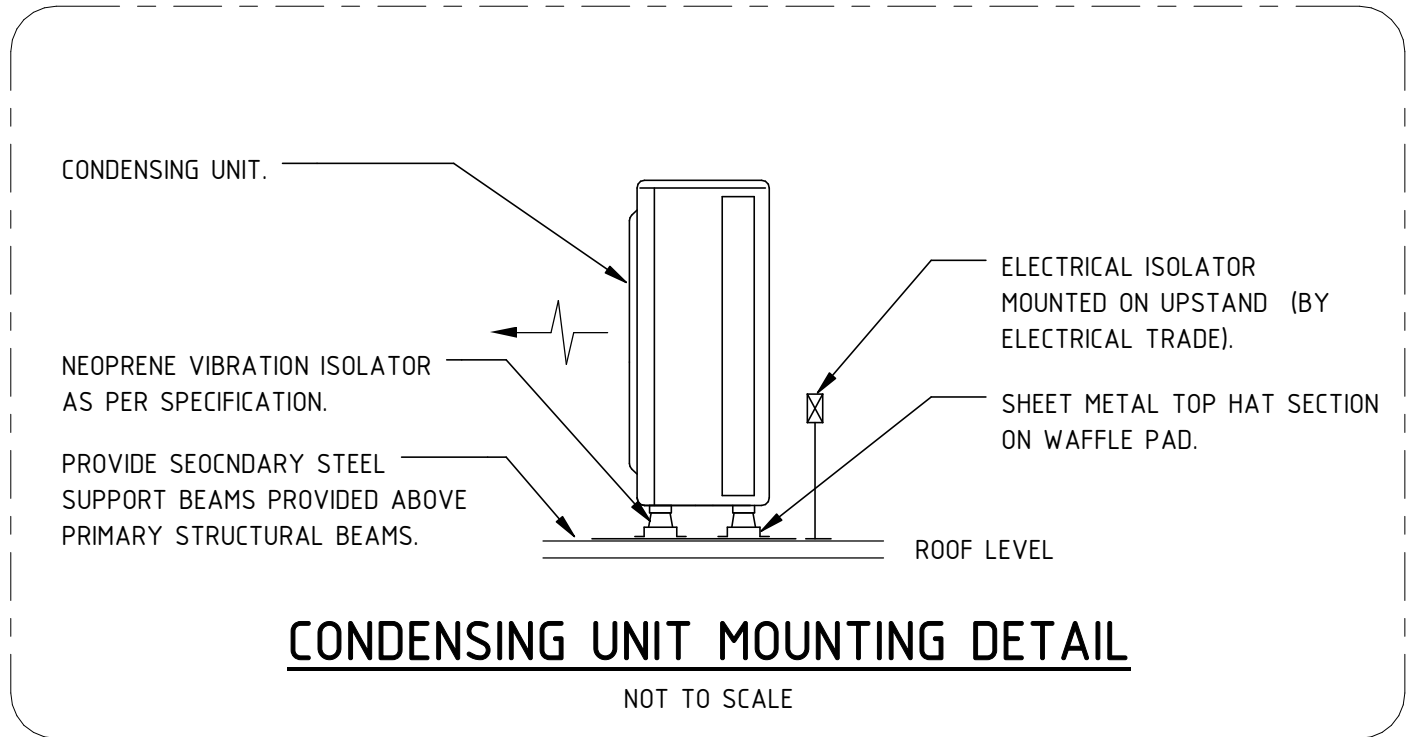
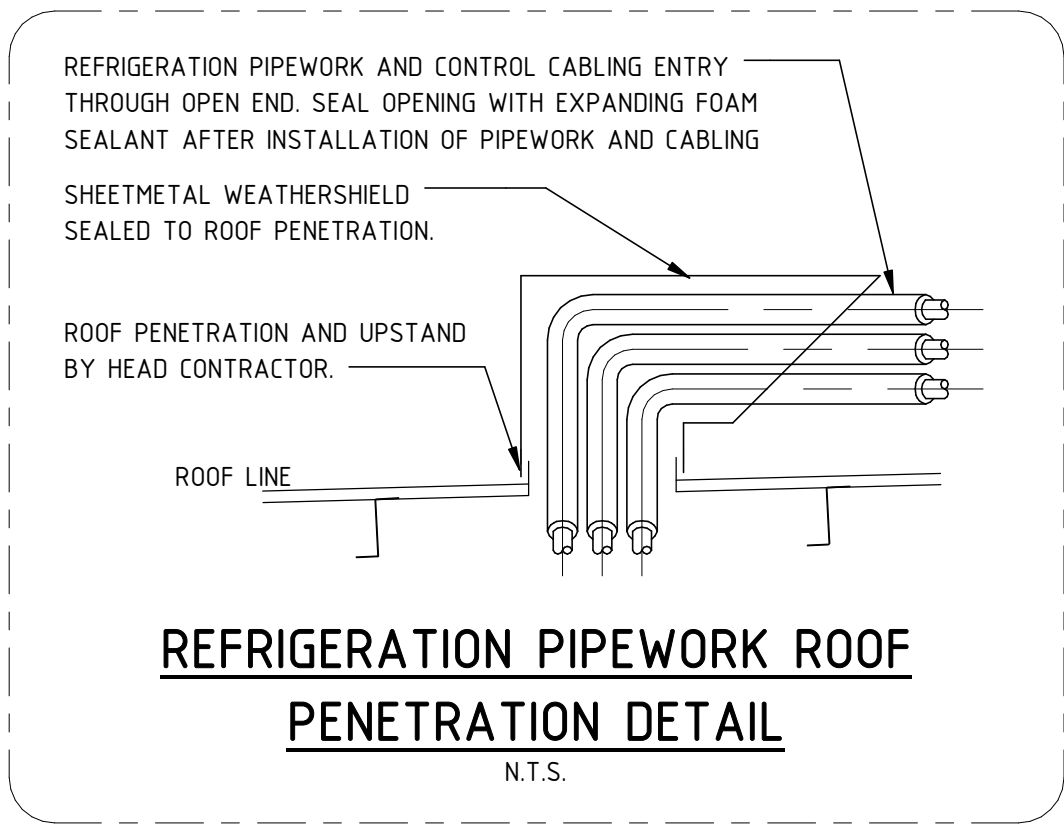
HYDRAULIC SERVICES

DESIGNER AS	DRAWN JH	DATE JULY 19
DRAWING NUMBER LCE12584-H05		REV A

© Copyright Lucid Consulting Australia



CONSTRUCTION ISSUE



LEGEND OF SYMBOLS

- ROOF MOUNTED EXHAUST AIR COWL
- AIR COOLED CONDENSING UNIT
- ACCESS HATCH - PROVIDED BY BUILDER
- WALL MOUNTED TYPE FAN COIL UNIT
- TUNDISH PROVIDED BY HYDRAULIC SERVICES TRADE
- HEADER BOX TYPE EXHAUST AIR FAN
- FLEXIBLE TYPE DUCTWORK
- REFRIGERATION PIPEWORK
- 1-WAY CURVED BLADE DIFFUSER

CONSTRUCTION ISSUE

A	CONSTRUCTION ISSUE		01.01.19	HW	
T1	TENDER ISSUE		02.06.17	HW	
REV	DESCRIPTION		DATE	CHKD	
<div><div></div><div>LUCID</div><div>CONSULTING AUSTRALIA</div><div>Level 3/169, Pirie St Adelaide SA 5000</div><div>Phone: (08) 8407 9700</div><div>Email: adelaide@lucidconsulting.com.au</div></div>					
<div><div></div><div>STUDIO NINE</div><div>ARCHITECTS</div></div>					
PROJECT 168 PROSPECT ROAD, PROSPECT SA					
DRAWING ROOF PLAN, LEGEND OF SYMBOLS AND DETAILS					
<div><div>10500512345</div><div>m</div><div>SCALEBAR 1:100</div></div>					
SCALE 1:100 @ A1	Size A1	MECHANICAL SERVICES			
DESIGNER TC	DRAWN TC	DATE JULY 19	REV	CHKD	
DRAWING NUMBER LCE12584-M03				REV	A
© Copyright Lucid Consulting Australia					

DRAWING INDEX

LCE12584-M01	GROUND, FIRST FLOOR AIR CONDITIONING AND VENTILATION ARRANGEMENT, DRAWING INDEX AND GENERAL NOTES
LCE12584-M02	SECOND AND THIRD FLOOR AIR CONDITIONING AND VENTILATION ARRANGEMENT
LCE12584-M03	ROOF PLAN, LEGEND OF SYMBOLS AND DETAILS

GENERAL NOTES

- THE MECHANICAL SERVICES DRAWINGS SHALL BE READ IN CONJUNCTION WITH ARCHITECTURAL DRAWINGS, DETAILS AND OTHER ENGINEERING DRAWINGS AND SPECIFICATION AND WITH OTHER SUCH WRITTEN INSTRUCTIONS AS MAY BE ISSUED DURING THE COURSE OF THE CONTRACT.
- IF ANY DISCREPANCY OCCURS ON THE ENGINEERS DRAWINGS OR BETWEEN DRAWING AND SPECIFICATION, THE CONTRACTOR SHALL DURING TENDERING ASSUME THE LARGER/GREATER. ANY DISCREPANCY SHALL BE REFERRED TO THE ENGINEER BEFORE PROCEEDING WITH THE WORK.
- SUBSTITUTIONS MUST BE APPROVED BY THE ENGINEER AND BE INCLUDED IN ANY TENDER.
- UNLESS NOTED OTHERWISE ALL DIMENSIONS ARE IN MILLIMETRES. ALL DUCTWORK SIZES SHOWN ARE CLEAR INTERNAL DIMENSIONS ONLY.
- ALL WORKMANSHIP AND MATERIALS SHALL CONFORM TO THE RELEVANT AUSTRALIAN STANDARDS, CODES AND THE CONTRACT SPECIFICATION.
- ALL DUCTWORK SHALL CONFORM TO THE STANDARDS OF THE SHEET METAL AND AIR CONDITIONING CONTRACTORS NATIONAL ASSOCIATION (S.M.A.C.N.A.).
- ALL ROUTES, INCLUDING CONDENSATE AND REFRIGERATION PIPEWORK ARE SHOWN INDICATIVE AND ARE FOR PRICING PURPOSES ONLY. FINAL ROUTES ARE TO BE CONFIRMED AND COORDINATED ON SITE WITH ALL OTHER TRADES PRIOR TO INSTALLATION.
- DO NOT SCALE OFF DRAWINGS, ALL DIMENSIONS SHALL BE VERIFIED FROM THE ARCHITECTS DRAWINGS AND BY ACTUAL SITE MEASUREMENTS PRIOR TO MANUFACTURING AND INSTALLING MECHANICAL SERVICES.
- THE MECHANICAL TRADE SHALL BE RESPONSIBLE FOR SETTING OUT OF THEIR WORKS BY COORDINATING WITH ALL ASSOCIATED TRADES AND SERVICES.

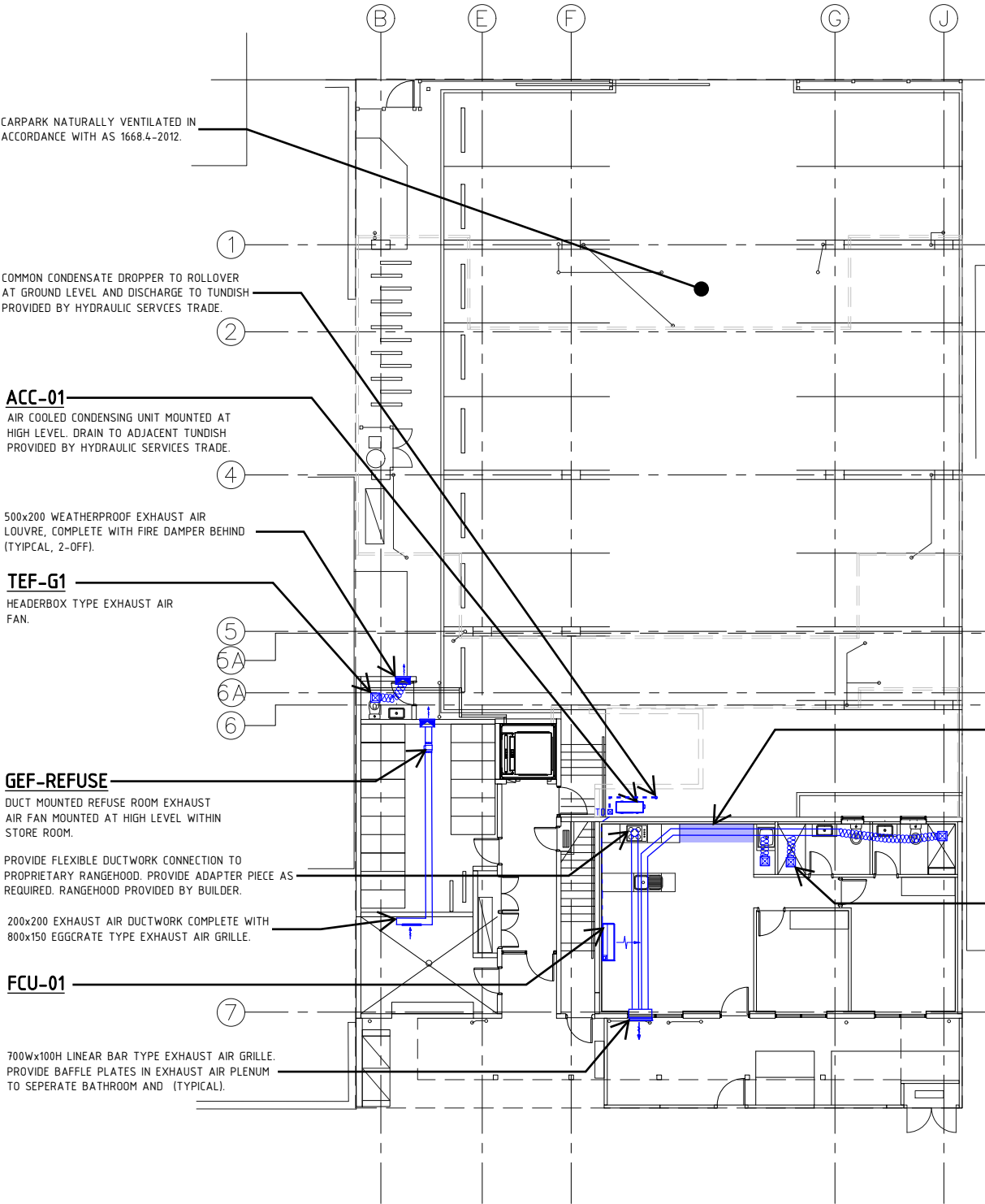
PROVIDE COMMON COPPER CONDENSATE DROPPER WITHIN SERVICES VOID FOR COLLECTION OF CONDENSATE DRAINAGE PIPEWORK FROM APARTMENTS 03, 08, 09, 13 AND 14.

HATCHED AREA DENOTES HYDRAULIC RISER ON LEVEL ABOVE. REFRIGERANT PIPEWORK TO RETICULATE WITHIN HYDRAULIC RISERS TO ROOF MOUNTED CONDENSING UNITS ABOVE (TYPICAL).

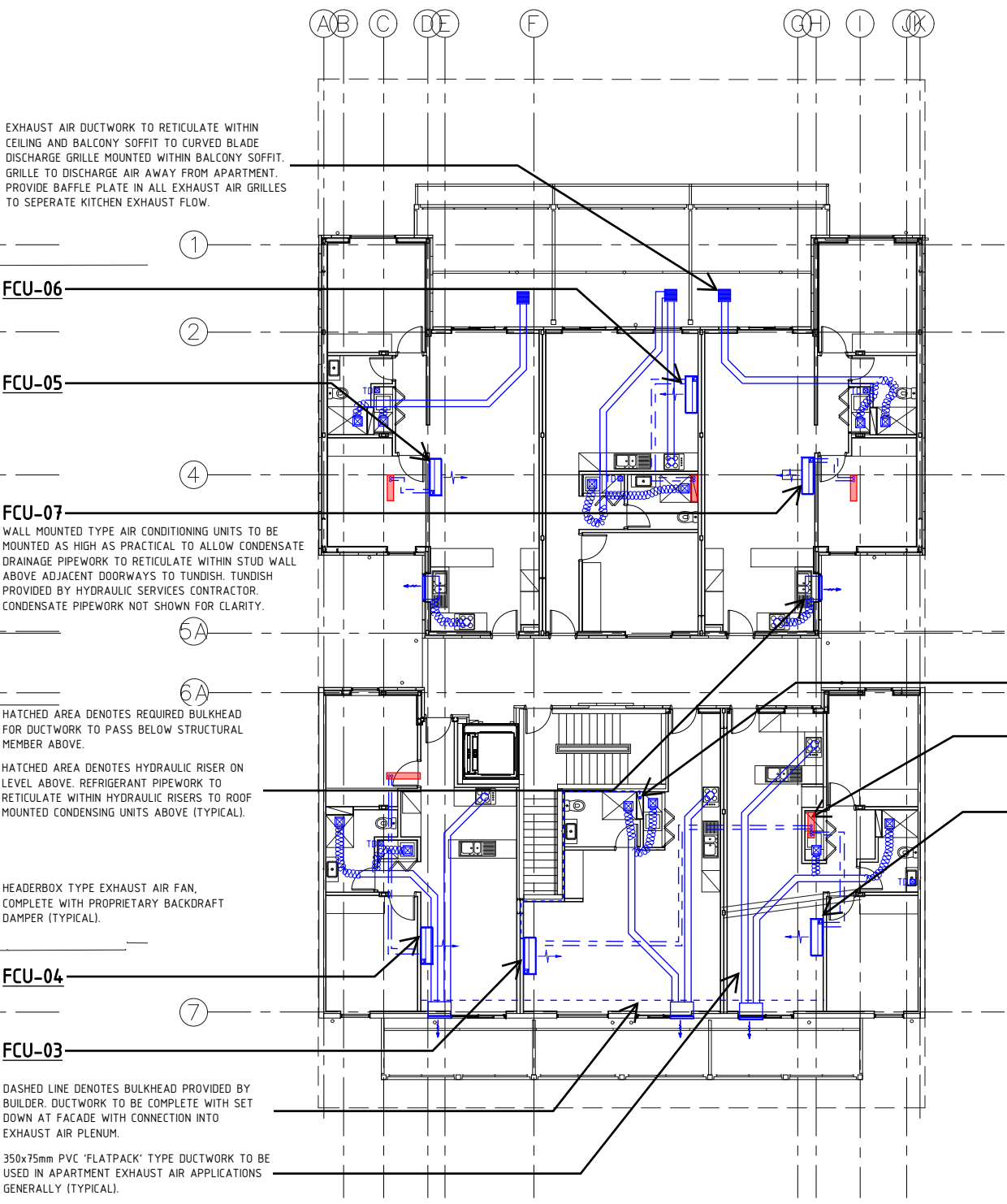
CONSTRUCTION ISSUE

A		CONSTRUCTION ISSUE	01.01.19	HW
T1		TENDER ISSUE	02.06.19	HW
REV	N	DESCRIPTION	DATE	CHKD
<div><div></div><div>LUCID CONSULTING AUSTRALIA</div><div>Level 3/169, Pirie St Adelaide SA 5000 Phone (08) 8407 9700 Email: adelaide@lucidconsulting.com.au</div></div>				
<div><div></div><div>STUDIO NINE ARCHITECTS</div></div>				
PROJECT 168 PROSPECT ROAD, PROSPECT SA				
DRAWING GROUND, FIRST FLOOR AIR CONDITIONING AND VENTILATION ARRANGEMENT, DRAWING INDEX AND GENERAL NOTES				
<div><div></div><div>SCALEBAR 1:100</div></div>				
SCALE 1:100 @ A1		Size A1	MECHANICAL SERVICES	
DESIGNER TC		DRAWN TC	DATE JULY 19	REV A
DRAWING NUMBER LCE12584-M01				

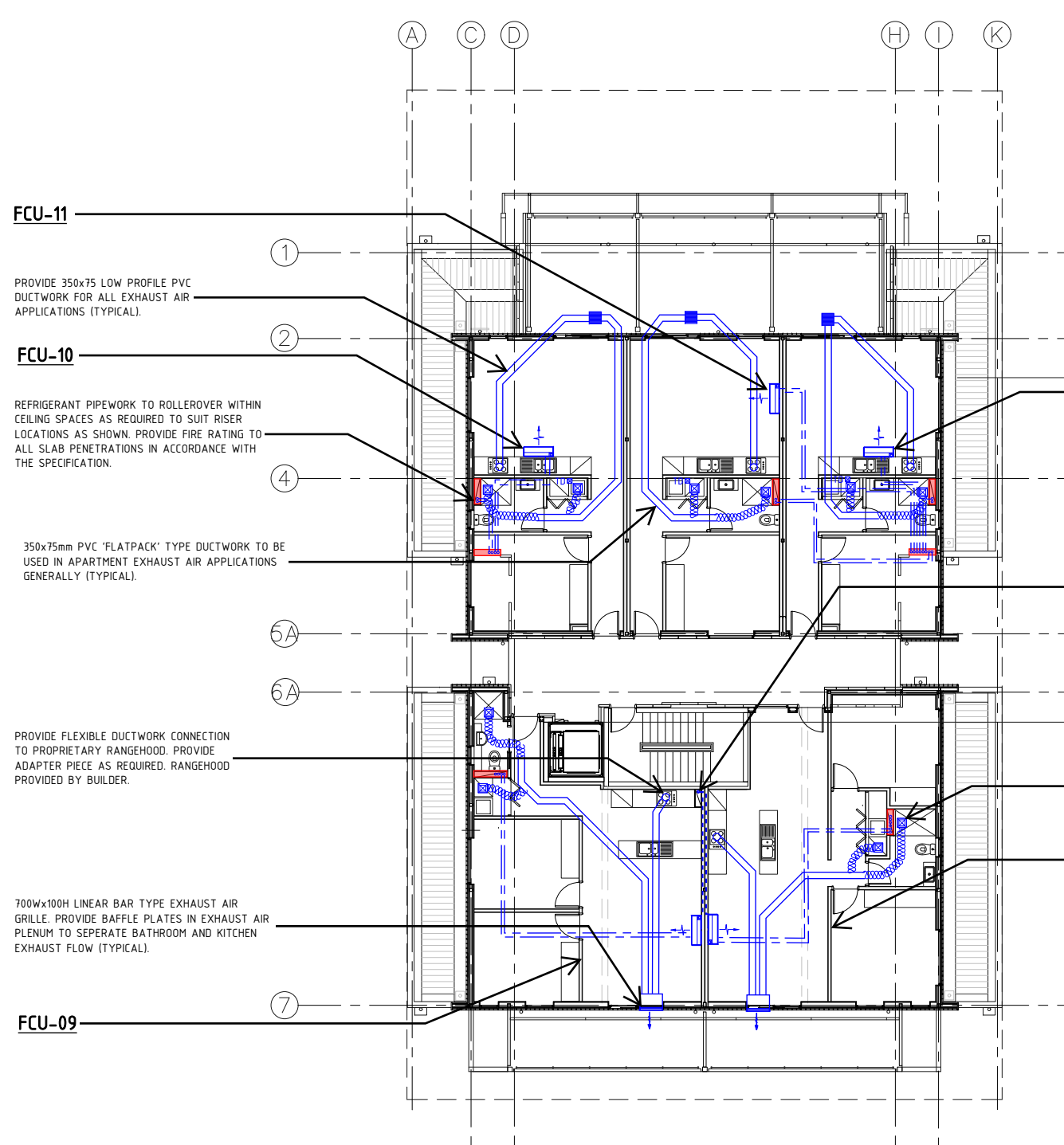
© Copyright Lucid Consulting Australia



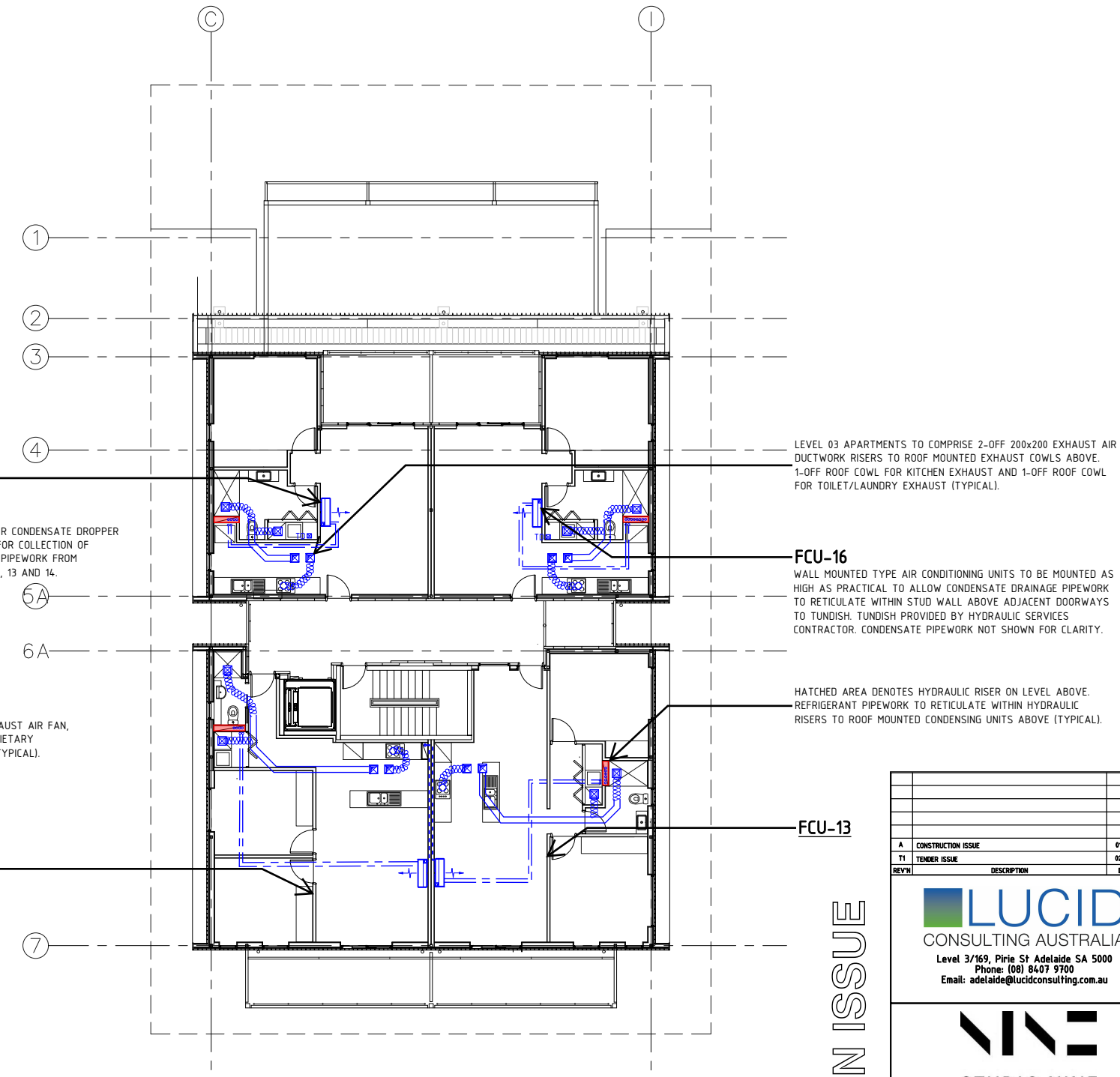
GROUND FLOOR PLAN / SITE PLAN
SCALE: 1:100



FIRST FLOOR PLAN
SCALE: 1:100



SECOND FLOOR PLAN
SCALE: 1:100



THIRD FLOOR PLAN
SCALE: 1:100

CONSTRUCTION ISSUE

A	CONSTRUCTION ISSUE	01.01.19	HW
T1	TENDER ISSUE	02.06.17	HW
REV'N	DESCRIPTION	DATE	CHK'D
<p>Level 3/169, Pirie St Adelaide SA 5000 Phone: (08) 8407 9700 Email: adelaide@lucidconsulting.com.au</p>			
<p>STUDIO NINE ARCHITECTS</p>			
<p>PROJECT 168 PROSPECT ROAD, PROSPECT SA</p>			
<p>DRAWING SECOND AND THIRD FLOOR AIR CONDITIONING AND VENTILATION ARRANGEMENT</p>			
<p>SCALEBAR 1:100</p>			
<p>SCALE 1:100 @ A1</p>			
<p>DESIGNER TC</p>			
<p>DRAWN TC</p>			
<p>DATE JULY 19</p>			
<p>DRAWING NUMBER LCE12584-M02</p>			
<p>REV'N A</p>			